



Smart Property IoT Solutions

 Chengdu Boost Information Technologies Inc.
 028-85363622-880



Stock Name: Boost Information



Stock Code: 833884

Company Profile



Chengdu Boost Information Technologies Inc. was founded in April 1999 and finished shareholding reform in June 2015, with a registered capital of RMB 60.91 million. It was listed in the National Equities Exchange and Quotations (NEEQ) in October 2015, and owns a wholly-owned subsidiary, Chengdu Boost Electric Engineering Co., Ltd.

We devote ourselves to the development of IoT system and communication devices with own intellectual property rights, and focus to application of IoT industry (including water, electricity and gas management, water quality monitoring, smart agriculture, smart buildings and smart communities, etc.) As the full member of international and domestic LoRa Alliance, we are domestic first batch of companies specialized in LoRa R&D and application.



CONTENTS /

**01 Problems and Difficulties of
Property Management**

02 Smart Property IoT Solutions

03 Smart Property-Profit & Value

**04 Smart Property-Extend
Application Scenarios**



PART 01

Problems and Difficulties of Property Management

- ★ Community living development brings many problems to property management
- ★ Difficulties and status of current property management



1.1 Community living development brings many problems to property management

community health



stolen property



low efficiency of meter reading
large pressure of advance payment



fire protection



parking problems



energy conservation
&
emission reduction



Property



Proprietor



community safety

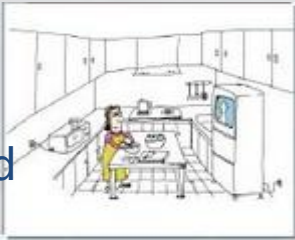
community environment



Children monitoring



Smart household





1.2 Difficulties and status of current property management



Advance
payment

Payment after power
consumption mode,
property has to
shoulder high cost in
advance



- Large pressure of capital for property
- Hard to control payment management , long time for capital recovery.

Energy
consumption

Large community
population , many
business modes,
large consumption of
energy, low devices
smart degree.



- unable to intensively manage and hard to monitor energy consumption, expanse and payment record, user profiles, consumption statistics.
 - Time and labor consuming of manual meter reading, low efficiency

Monitoring

Less smart devices
and low
informatization
supervision degree



- Problems such as public facilities, fire safety, environment health are hard to manage intensively and scientifically.

Therefore , it is urgent to add technical devices, deploy a complete smart property IoT management system. It cuts management cost and improve working efficiency.



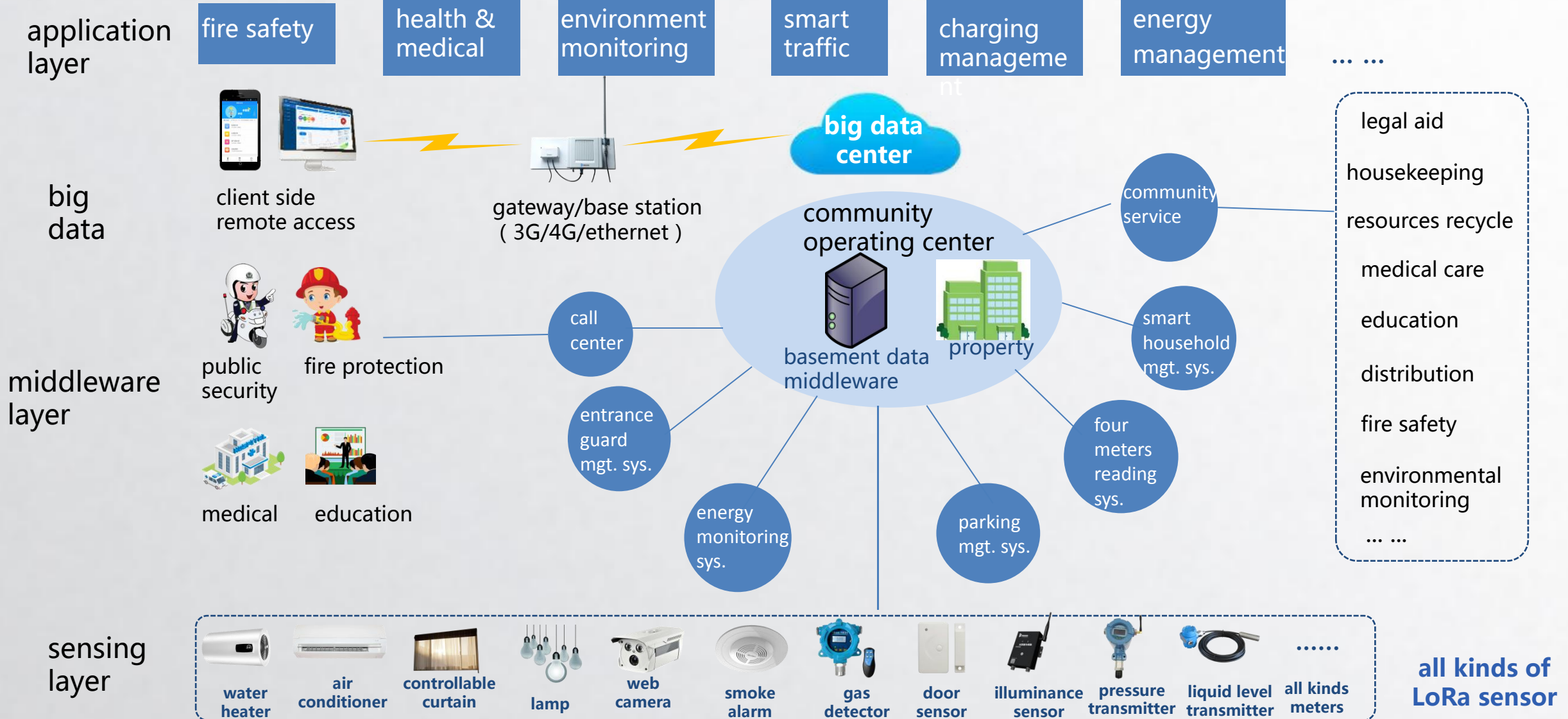
PART 02

Smart Property IoT Solutions

- ★ Smart property IoT solutions
 - working principle topological graph
- ★ Smart property IoT solutions
 - prepayment smart electric meter acquisition system
- ★ Smart property IoT solutions- supporting hardware
- ★ Smart property IoT solutions- - supporting software



2.1 Smart property IoT solutions-working principle topological graph



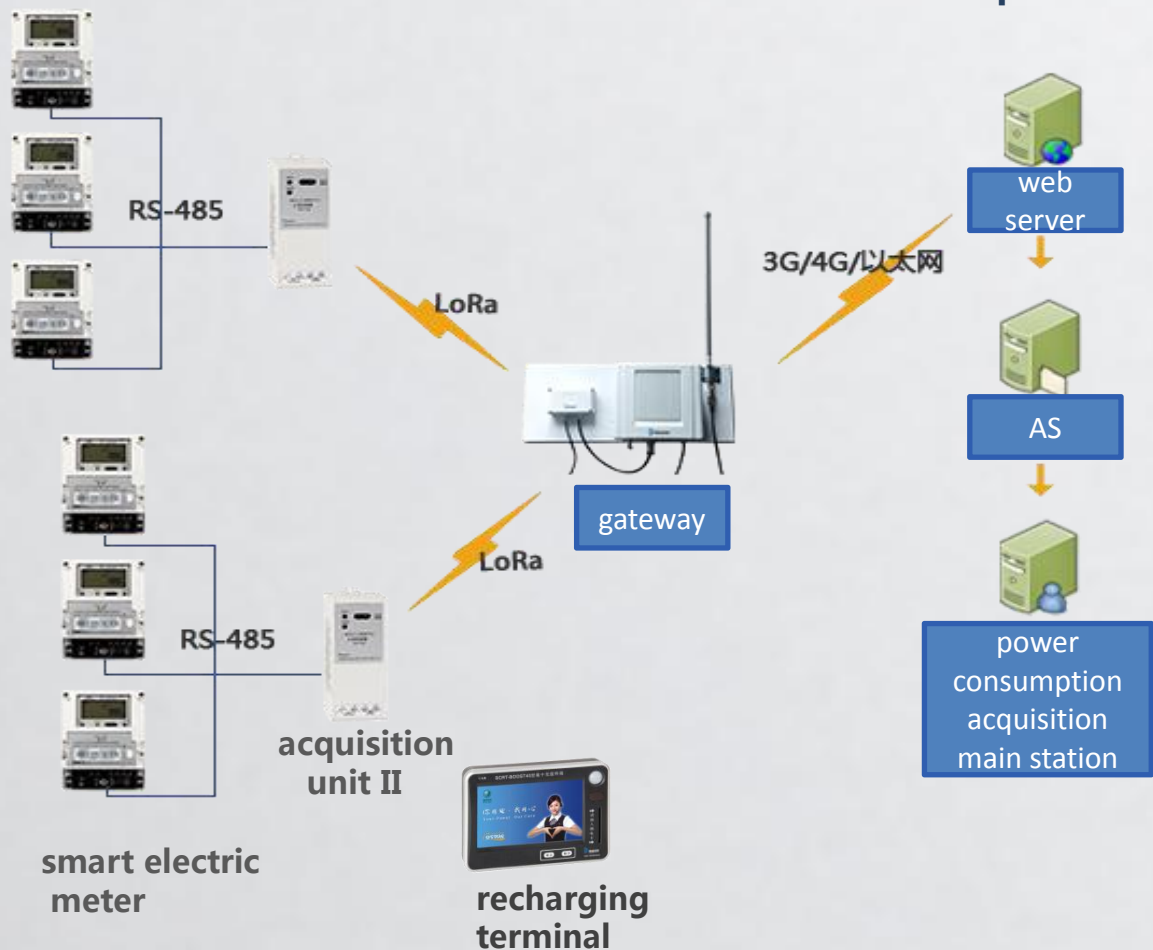


2.2 Smart Property-Prepayment smart electric meter acquisition sys.

data acquisition

information conversion

application operation



- **LoRa terminal (acquisition unit II)**
data acquisition, connect with smart meter through RS485
- **LoRa gateway**
transverter between LoRa data and server
coverage all terminal information and submit to server
- **web server**
route management, load balancing, rate self-adaption
system maintenance
- **AS (Application server)**
adjustable to specific application
when extend service, only related terminal and application
server should be added
no need to reset up gateway and web server.

working structure of prepayment electric meter remote centralized reading



2.3 Prepayment Smart Electric Meter Acquisition Sys.-Supporting Hardware



electric meter module
(LoRa wireless)



acquisition unit II
(LoRa wireless)



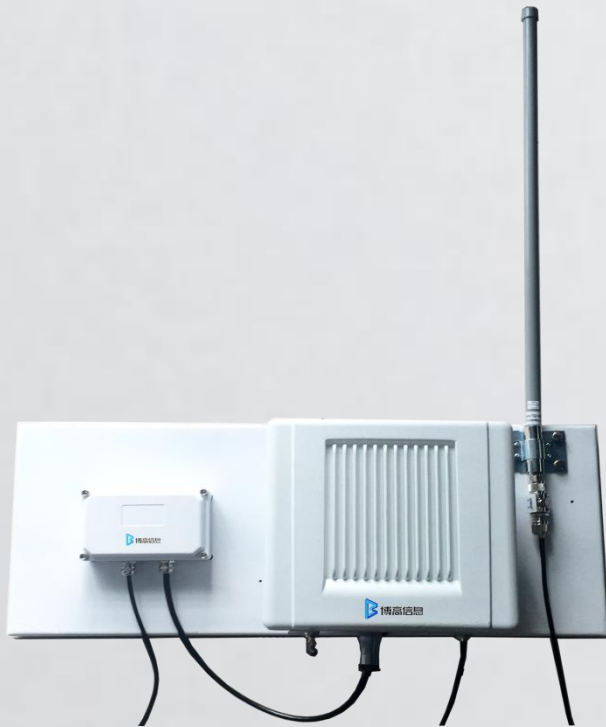
multimedia centralized
recharging terminal

- ◆ inset in smart electric meter, connect with other terminal
- ◆ support LoRaWAN wireless transmission protocol
- ◆ Support DLMS protocol
- ◆ ultra-long distance and large coverage
- ◆ ultra-high sensitivity , up to-146dBm
- ◆ data acquisition, connect with smart meter through RS485
- ◆ use LoRa modulation technique, follow LoRaWAN wireless transmission protocol
- ◆ Support DLMS protocol
- ◆ uplink wireless channel amount up to 48, downlink up to 30
- ◆ local recharging of smart electric meter
- ◆ consumption query, local infrared debugging, remote package updating
- ◆ support 10/100Base-T Ethernet CATV network



2.4 Supporting hardware- LoRaWAN gateway

LoRaWAN gateway also called LoRa base station is the key node device of low power WAN, supporting LoRa terminal location and Ethernet/4G all netcom communication, achieving multi-frequency clock and multi channel receiving at the same time.



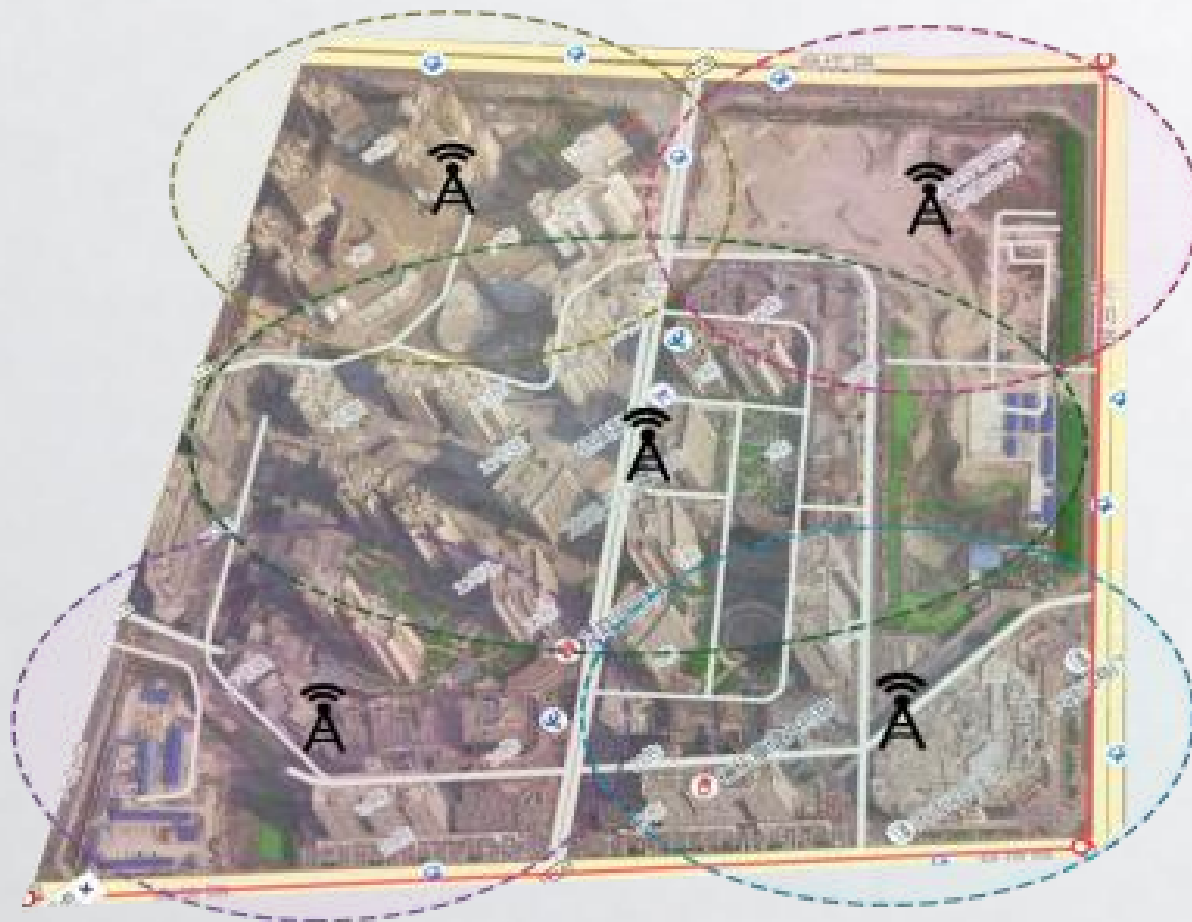
Functional characteristics

- ◆ support LoRaWAN protocol
- ◆ support Ethernet/4G all Netcom
- ◆ self-adaption transmission rate
- ◆ IP66 waterproof degree
- ◆ ultra-high sensitivity , up to-146dBm
- ◆ support LoRa terminal location
- ◆ multi-gateway network backup
- ◆ effective lightning protection



2.5 Supporting Hardware-Gateway Deploy

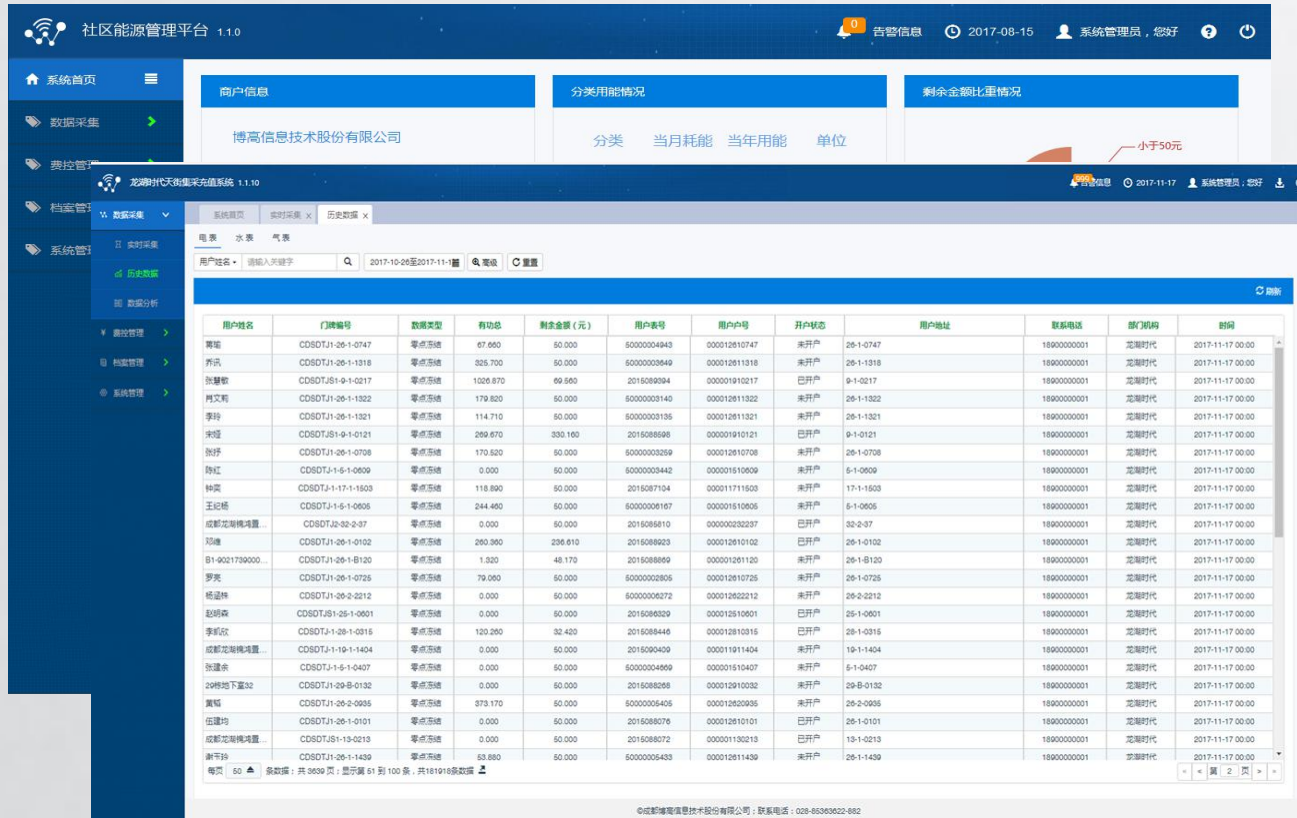
Deploy 5 to 10 gateway on the building roof to cover all the range of community building, outdoor environment and basement.



Community LoRa Gateway Application
Aerial View



2.6 Supporting Software-Main Station Energy Consumption Acquisition Sys.



• Four meters remote centralized reading

- 1.High management and service level of meter reading
- 2.Data monitoring and fault detect of all meters
- 3.Non-interruption of manual meter reading and charge

• Remote switch on-out

Improve charging management

• Recharging, cost control and alarm

- 1.Pay before consumption mode (user must open an account and prepay cost at first electricity purchase). lower management cost
- 2.Query payment info. report power cut , alarm abnormal consumption
3. multi-payment modes: WeChat Pay, Alipay, and cash.

• energy consumption analysis

Statistic analysis of consumption classification, balance ratio, daily , monthly and yearly energy consumption conditions, abnormal conditions, etc.

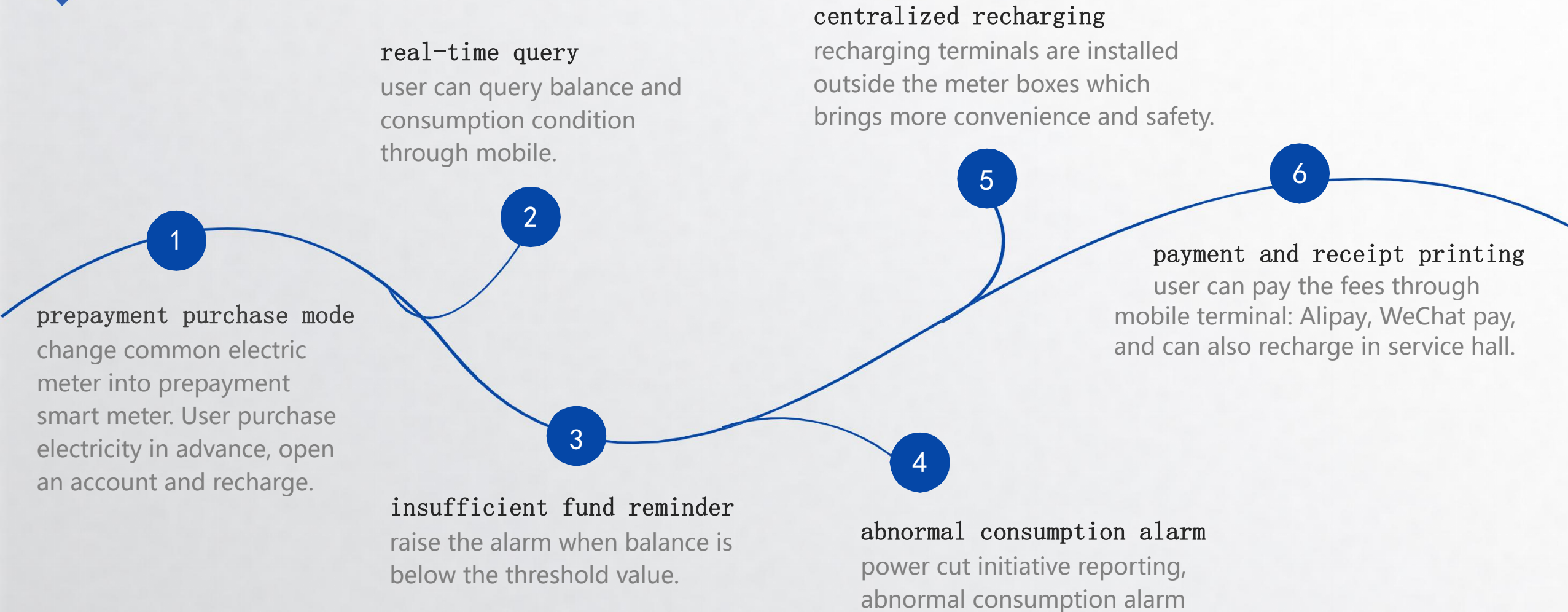


2.7 Supporting Software-Main Station Energy Consumption Acquisition Sys.



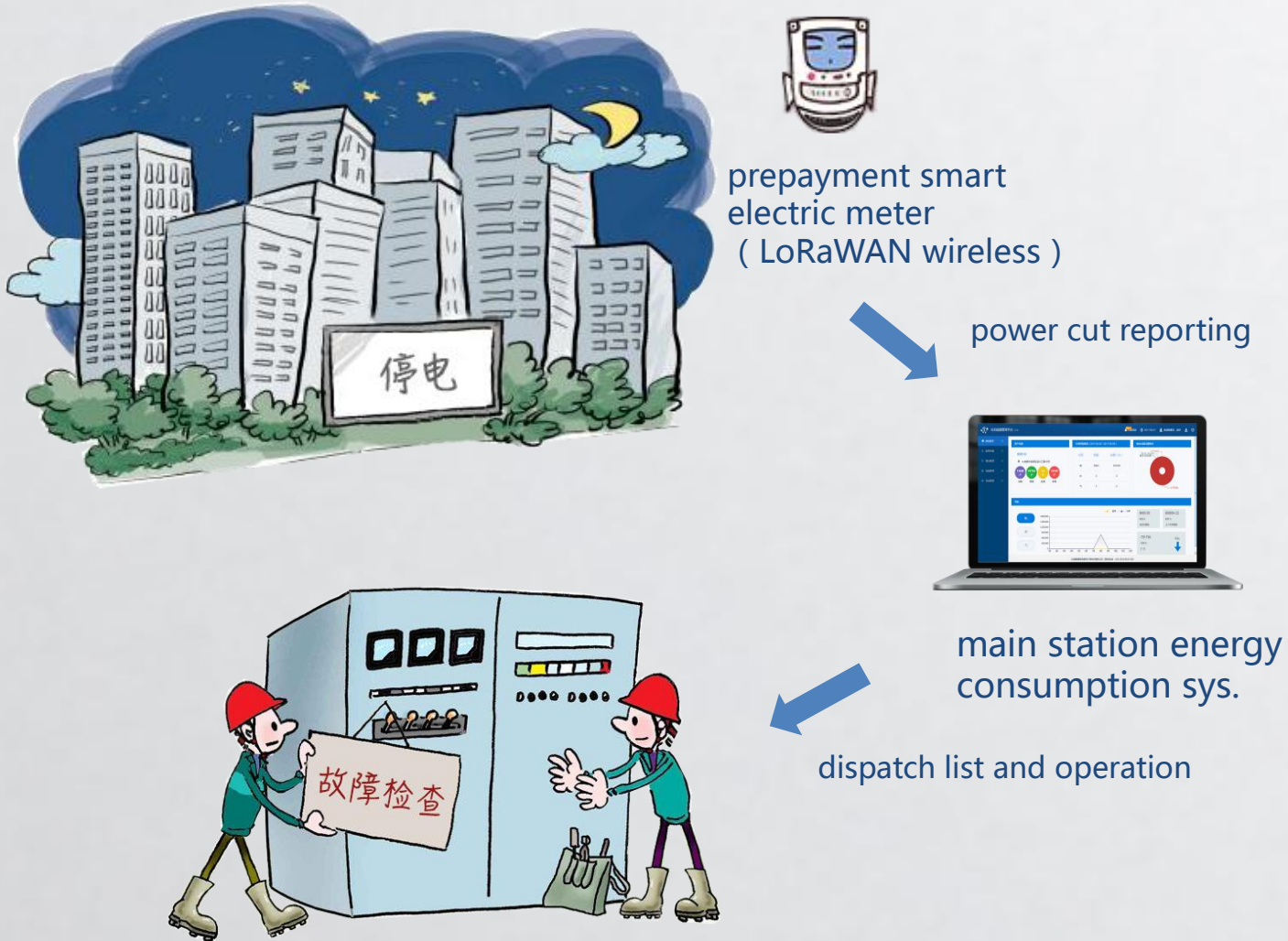


2.8 Supporting Software-Main Station Recharging and Cost Control





2.9 Supporting Software–Power Cut Reporting



value-added service: power cut initiative reporting

- Use LoRaWAN communication protocol to realize power cut initiative reporting, which is impossible for other communication mode.
- Raise the alarm automatically when abnormal condition happens. Property staff will inform outworkers to detect fault on the site, which improve property service and custom satisfaction.



2.10 Supporting Software–Prepayment Electricity Purchase



Prepayment Electricity Purchase process

1

Firstly, user need to confirm whether it is the smart electric meter supporting prepayment electricity purchase.

2

User need to open an account in the service hall before the first time recharging and payment. User can recharge after creating user profile.

3

Property management staff is responsible for account opening and card writing. (write user profile and payment amount into the electric purchase card)

4

Main station will send user profile and first time prepayment amount to smart electric meter.

5

User swipe card to pay on the recharging terminal after opening an account.

6

When balance alarm appears, user can use proprietor APP or official account to pay. User can also go to service hall to recharge through main station.



2.10 Supporting Software–Secondary Development of Mgmt. Software



1

Cash, Alipay, WeChat pay

2

Secondary development of
property mgmt. software

Able to conduct customized
secondary development based
on current property mgmt.
software products.



2.11 Supporting Software–Handheld Road Testing, Supplement Reading Scheme

network road testing
terminal, convenient to
network planning and road
testing



Transmit through Bluetooth to mobile.
Road testing APP can check real-time
network coverage and signal quality.

supplement reading APP , fault detection ,
insure 100% success rate of meter reading





PART 03

Smart Property -Profit & Value

- ★ scheme advantages
- ★ using data comparison



3.1 Scheme Advantages

Technical advantages of LoRa

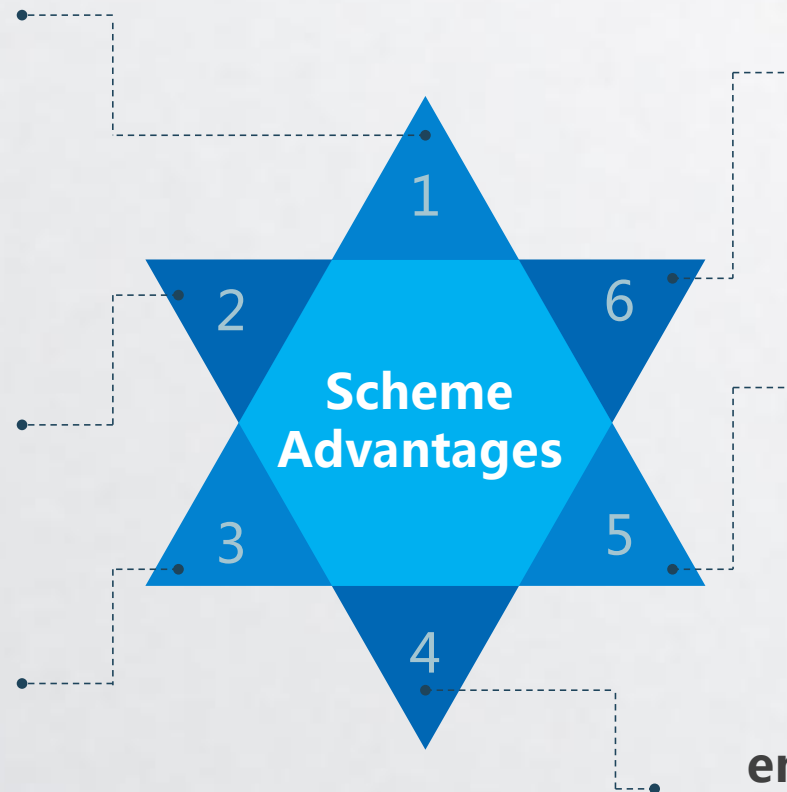
LoRa network is easy to establish and deploy. It is the most widely applied IoT dedicated network communication technology.

Lower cost

Property can avoid advance payment, and reduce staff management cost.

High expansibility

Easy to expand other business based on current sys. E.g.: water, gas, electric and heat meters reading, smart household service. No need to redeploy server and gateway.



Improve efficiency

Remote acquisition of all meters data with LoRa. Faster speed, higher efficiency, free from manual operation.

Safety control

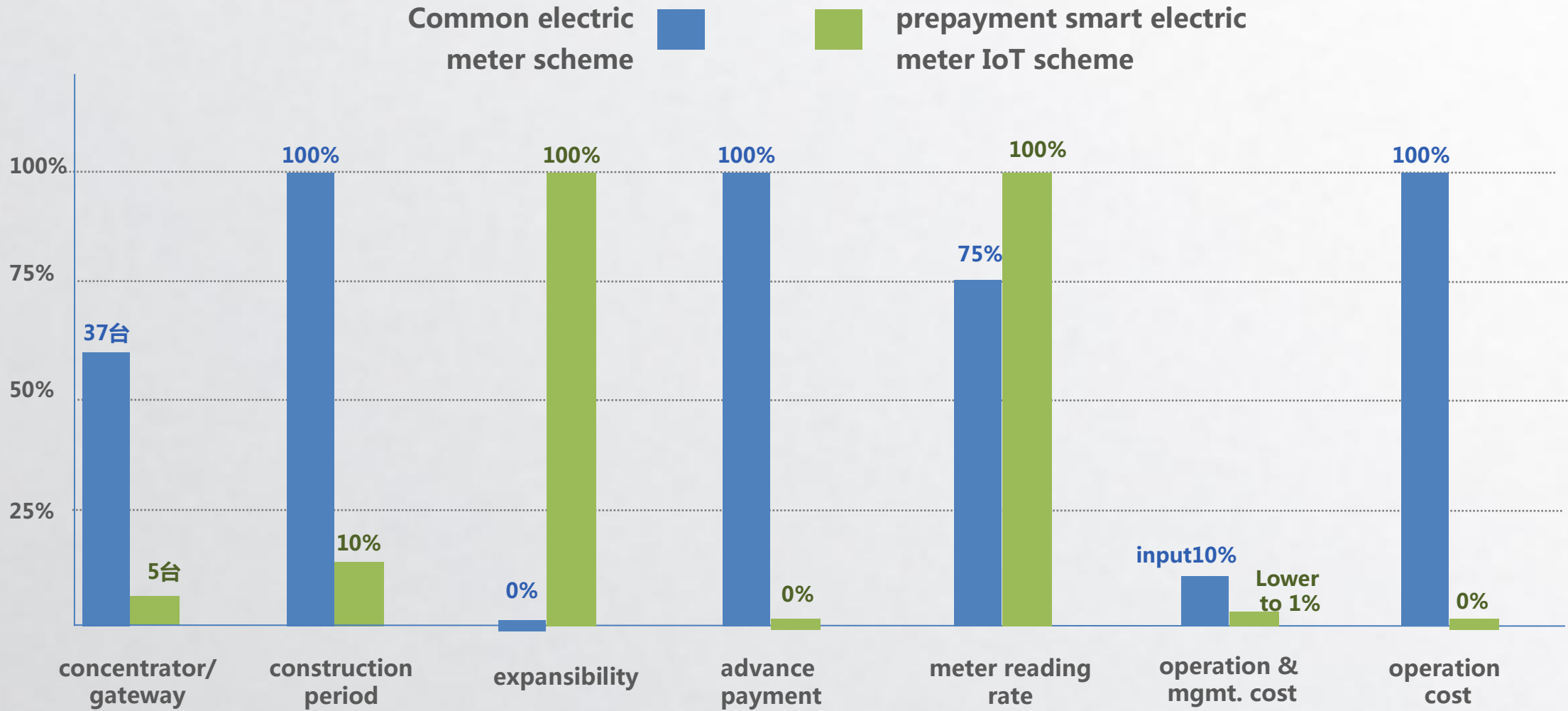
Build self network. All sensors need to report data to local storage.

energy consumption management

Community energy management platform can analyze all kinds of energy consumption data, and work out alarm index.



3.2 Using data Comparison





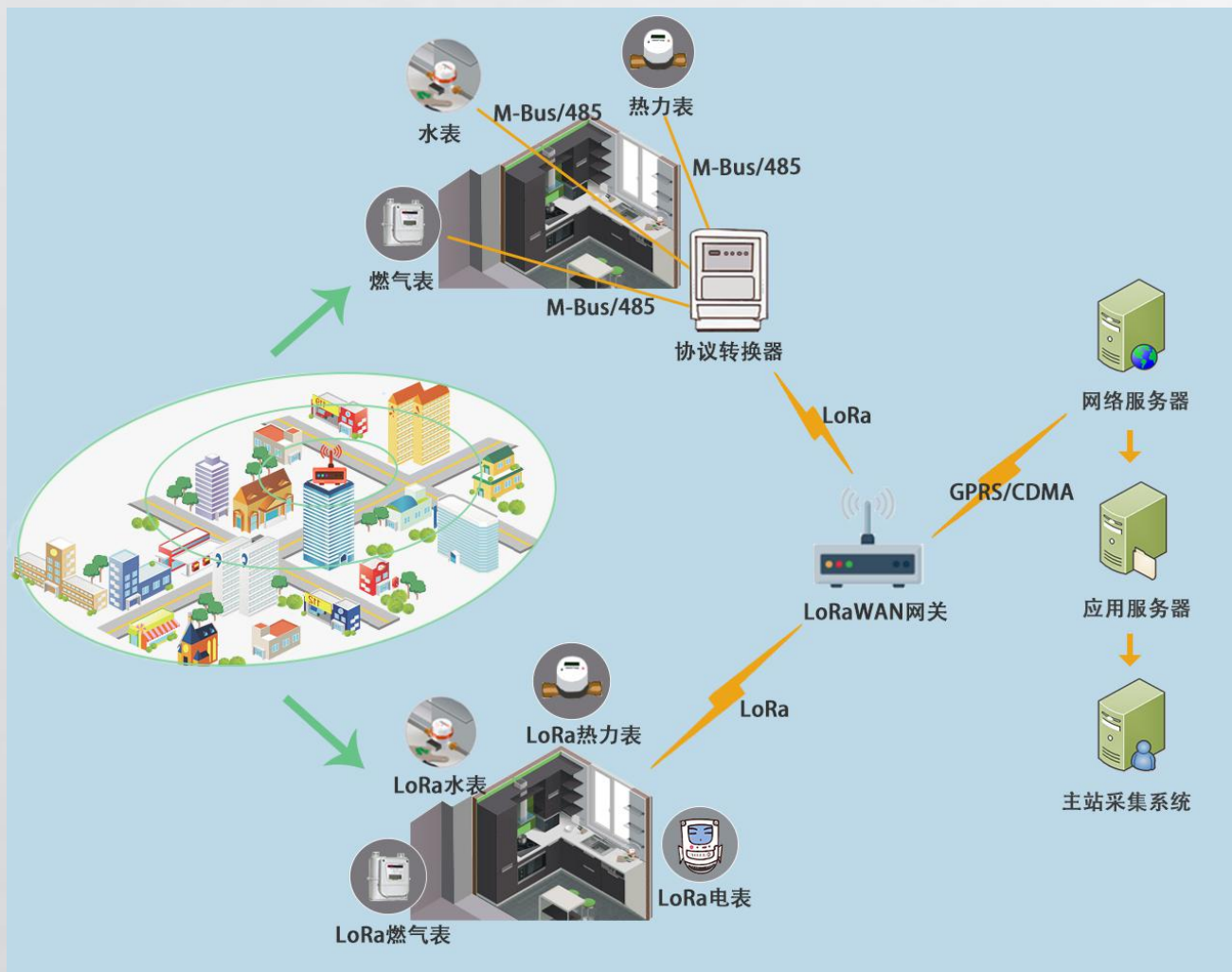
PART 04

Smart Property-Extend Application Scenarios

- ★ typical application scenarios of smart property
- ★ customer group and cooperation modes



4.1 Smart Property-Centralized Meter Reading Scenarios



- **real-time data**

real-time reading of water, gas, electric and heat meters data. Daily auto-updating of frozen data.

- **Line loss management**

Achieve “four divided” line loss calculation, including: divided areas, phases, voltages and lines.

- **energy analysis**

Analysis of daily energy consumption, abnormal alarm, and link relative condition.

- **meter reading efficiency**

Achieve remote meter reading through LoRa communication mode with higher speed.



4.2 Smart Property-Community Smart Zone Location Scenarios



- **Location Tracker**

LoRa advantages: Able to get location of proprietor, pets, elders and children with cards once the terminal nodes connect with network.

According to these data, proprietor will know location of family members. E.g.: children playing place, exercising place, heart rate and pulse data of elders.



4.3 Smart Property-Smart Household Service Scenarios



web camera

smoke alarm

gas detector



electric curtain

air conditioner

lamp

electric
water
heater



sport monitoring
heartbeat
monitoring

sleep monitoring
blood pressure
monitoring



remote access
of client-side

- **smart household**

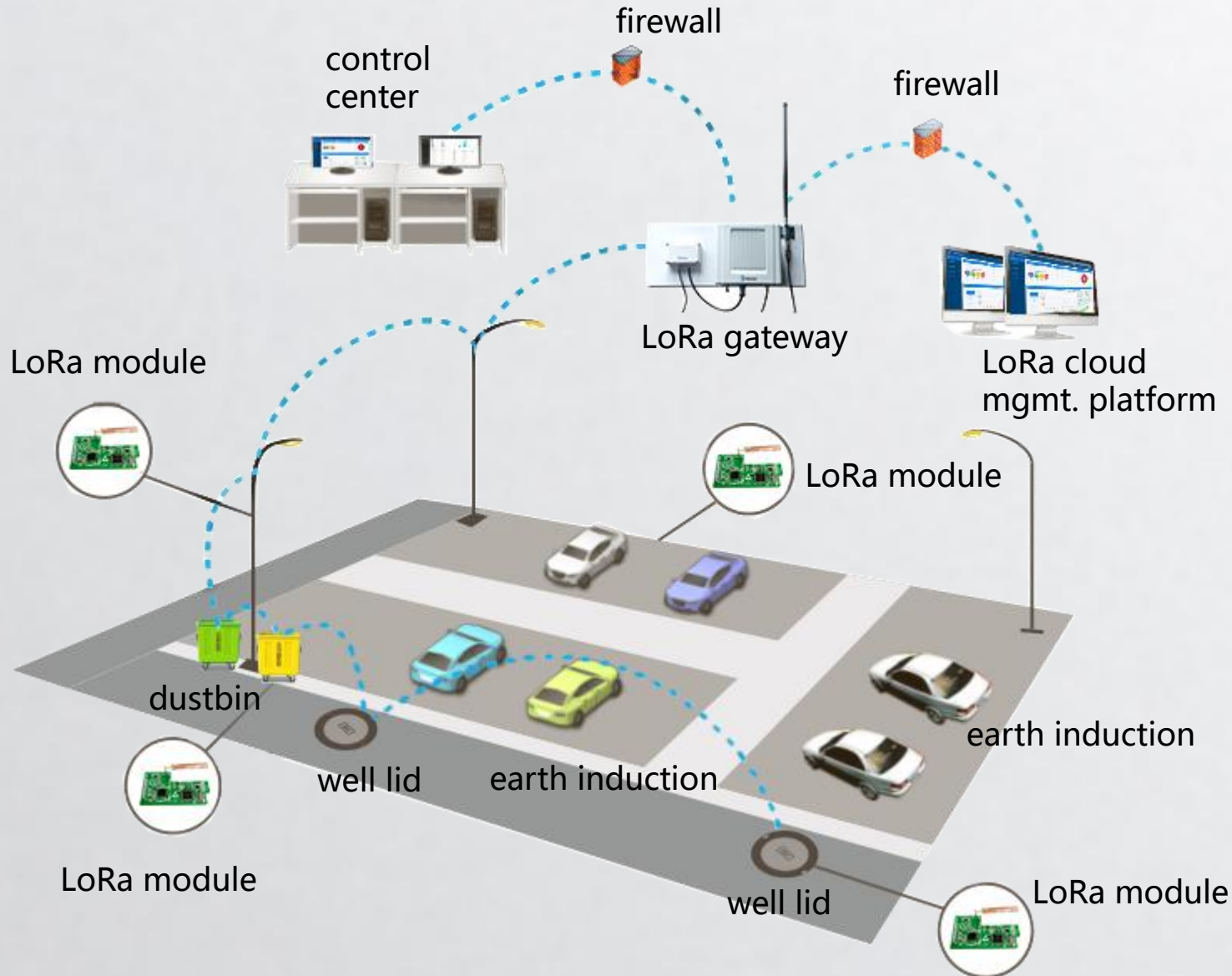
Connect all sensors, smart home appliances, wearable devices together and remotely check and control through mobiles and computers. Bring new family life with safety, leisure and enjoyment.

- **energy consumption analysis**

Data analysis of smart air fan, indoor temperature, energy conservation control, smart air conditional, operating record.



4.4 Smart Property-Community Public Environment Mgmt. Scenarios



- **Smart parking**

LoRa geomagnetism can monitor real-time parking space, effectively solving illegal parking and difficulty of finding parking space with transparent information.

- **Street lamp monitoring**

Remote street lamp monitoring, fault detection, realizing dynamic lighting and energy conservation mgmt.

- **Smart well lid**

Real-time monitoring of community well lid location. Transmit abnormal loss, abnormal open and damage information for analysis and alarm.

- **Dustbin monitoring**

When the sensor in the dustbin monitors that dustbin is full,, alarm will raise and information will be reported to mgmt. platform.



4.5 Smart Property-Charging Pile Monitoring Scenarios



- ◆ Connect unified charging pile with system to realize real-time data acquisition.
- ◆ Manage city charging pile distribution based on GIS electronic map.
- ◆ Remote monitoring of charging pile real-time status, charge level acquisition.

● Charging Pile Monitoring

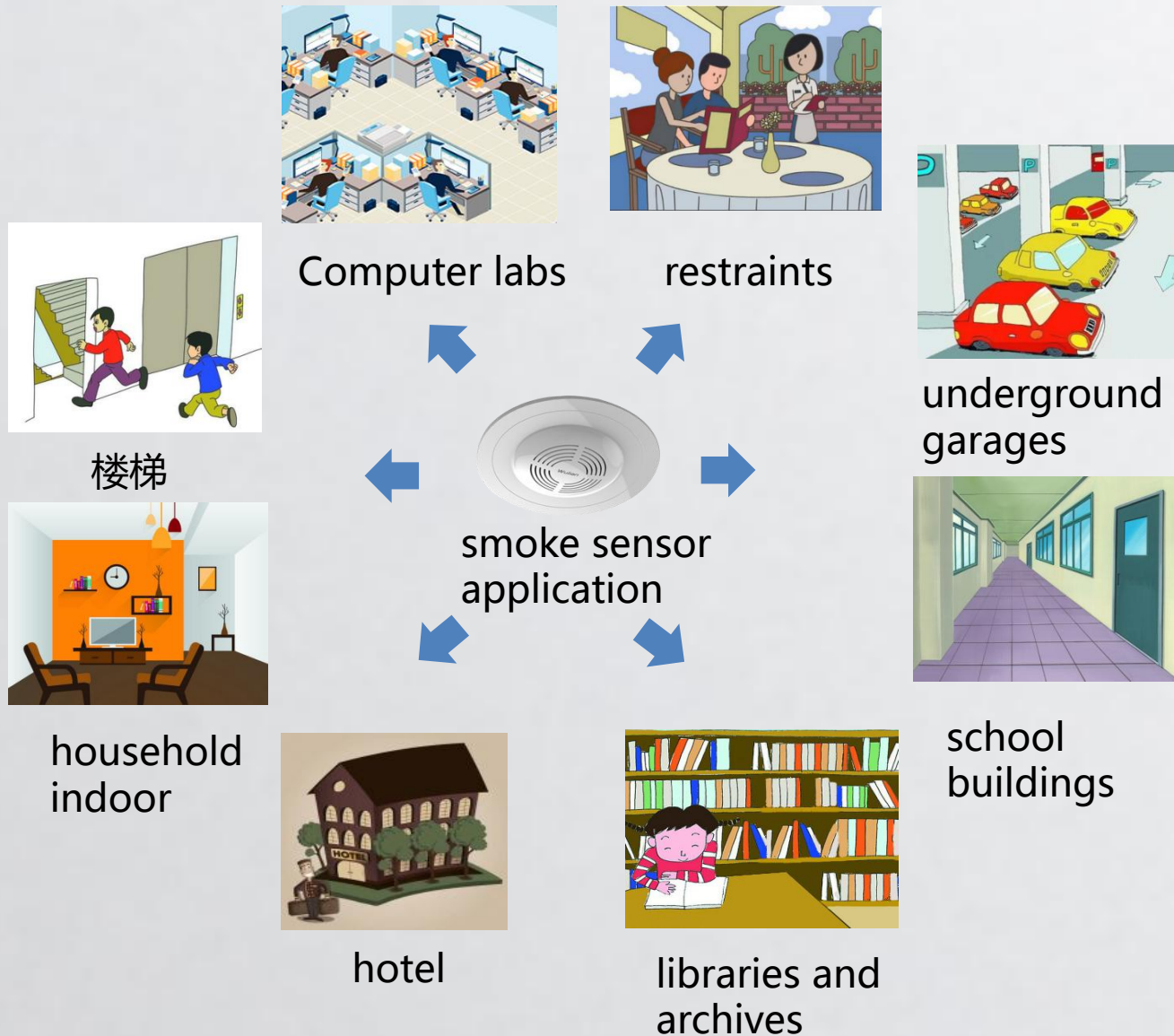
Status monitoring: data acquisition and real-time monitoring of current, voltage, on-off state, protection status.

Charging monitoring : data acquisition and real-time monitoring of voltage input and output, current, power factor, charging time, charging mode and so on.

Car battery status: car battery status monitoring, e.g.: battery voltage, temperature fault and other information.



4.6 Smart Property-Smoke Sensor Monitoring Scenarios



- **Operating principle**

Smoke sensor will give an alarm to the mobile and main station side of monitoring platform when smoke scope exceed threshold value.

- **Smoke monitoring**

Applied newest IoT technology. Use WeChat and APP to monitor alarm platform, and realize management of all sensors.



4.7 Products Planning of Boost IoT

No.	Product Name	Notes		No.	Product Name	Notes
1	LORAWAN gateway	For sale		11	LORAWAN temp.&humi. sensor	In R&D
2	LORAWAN electric meter module	For sale		12	LORAWAN plate No. identification sys.	Realized
3	LORAWAN electric meter concentrator	For sale		13	LORAWAN liquid transducer	Realized
4	LORAWAN smart water meter	Small-lot production		14	Centralized recharging terminal	For sale
5	LORAWAN smart gas meter	Small-lot production		15	LORAWAN location product	In R&D
6	LORAWAN tarnsverter	For sale		16	LORAWAN street lamp controller	In R&D
7	LORAWAN standalone smoke sensor	Small-lot production		17	LORAWAN air quality monitoring	In R&D
8	LORAWAN illuminance sensor	Small-lot production		18	LORAWAN soil monitoring	In R&D
9	LORAWAN noise sensor	In R&D		19	LORAWAN pressure transmitter	Realized
10	LORAWAN well lid monitoring	In R&D		20	LORAWAN water and gas quality monitoring	In R&D

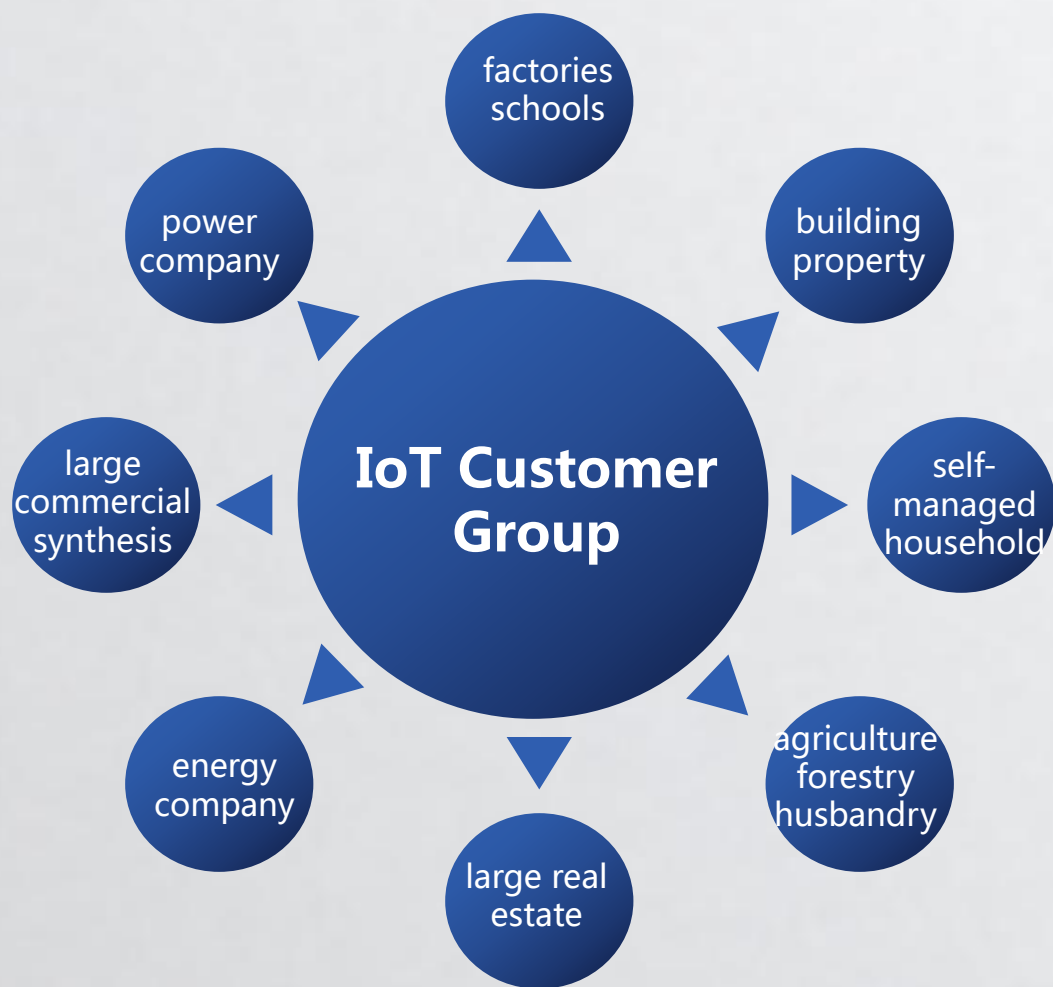


4.7 Smart Property Scenarios





4.8 Customer Group and Cooperation Modes



1 Joint development---Instrument company purchase our communication module.

2 OEM---。 Purchase terminal and gateway. We provide integrated solutions of products, technology and service

3 Multi-mode cooperation ---diversified cooperation modes and build IoT basis together.

electric meter company

water meter company

gas meter company

devices manufacturer



Contact Us



Company name : Chengdu Boost Information Technologies Inc.

Add : No.18, Wuxing 3rd road, Wuhou District, Chengdu.

Website : <http://www.emerp.com.cn/>

Tel : 028-85363622-880

Phone : 18030501526

QQ : 920982484



Name : Boost IoT

WeChat No. : boostemerp

THANK YOU

www.cdbboost.cn